



# NEWS

EASTLAKE COMMUNITY COUNCIL  
2 234 Minor AVENUE EAST.  
SEATTLE, WASHINGTON 98102  
EA 5-4934

June 76

## at our next meeting

...a visual inventory of buildings and urban design resources within the Eastlake community.

## featuring

Victor Steinbrueck, noted architect and Eastlake resident, will provide commentary on architecturally and historically significant buildings and sites in our community, e.g. being representative of a style or period, the work of an important architect, association with historic personages, events, or activities, and the quality of excellence.

Over 100 color slides of Eastlake places taken by Ted Choi will be shown during the presentation.

COME JOIN US for an evening of community, the last before the summer break. Coffee and goodies will be served.

## and

...also on the program--for those who missed him during our April meeting--will be Michael Johnson, Community Crime Prevention Program Coordinator, who will talk on how we can organize our own "blockwatches" and increase our sense of community.

THIS IS A VERY SPECIAL MEETING. DON'T MISS IT.

## the date

Tuesday \* June 8th \* 7:30 p.m. \* Seward School Library

## streetend parks dedications set for June 27

The streetend parks at Newton, Lynn, and Roanoke Streets along Fairview East have been completed and plans for a dedication celebration are being finalized.

In the case of Newton and Lynn Parks, at least, it will be a rededication; both of these parks were originally neighborhood projects that the city eventually took over, providing the earthmoving and heavy work needed to create little parks on otherwise unused public land. The park at Roanoke is actually in two parts, gracing the not-so-graceful entrance of Roanoke Reef.

All of the parks afford a quiet place to munch a lunch, meditate, watch ducks, or let tensions fizzle out over Lake Union. Although the neighborhood's work all but disappeared under the heavy machinery of the contractors, we're quite sure the City would not have taken over were it not for the evenings and weekends spent by neighborhood people in the initial moves toward creating these "windows on the lake."

As part of the dedication, a flowering cherry tree at the Newton Street Park will be dedicated to Doris Shanley, who died last year after a short illness. Doris was one of the mainstays of the Community Council in its beginnings, and brought many new people into the Council, and understanding among those in it.

\*\*\*\*\*

"The difference between man's soot and nature's grime is that nature knows how to clean up after herself."

## eastlake wash June 12 & 13

The 1976 Neighborhood Pride Program "Seattle Wash" is underway. This is a city-wide "clean-up, fix-up, paint-up" campaign of which the Rev. Dale E. Turner, Pastor of the University Congregational Church is General Chairman.

June 12th and 13th are set aside for concentrating assistance in the Eastlake area. We are able to help with supply of free litter bags, T-shirt iron-ons for participating children, and volunteer buttons.

## the biltless!

We have been notified by Alfred Petty, Supt. of Buildings, that "after careful review of the (Eastlake Hotel), it has been determined that the proposal is not a hotel. The developers will have an opportunity to file an appeal with the City Hearing Examiner."

This was a crucial point, as we pointed out in the May newsletter; as it stands now, the structure planned for Eastlake north of Roanoke would have a height limit of 35', rather than the 65' limit of "hotel."

The celebration will emphasize USE of the parks, with a light touch on words. Each park will be dedicated separately, beginning at the Roanoke Streetend Park at 2 p.m. At 3 p.m. the Lynn Street Dedication will begin, and at 4 p.m. the Newton Streetend. There will be wonderful entertainment at EACH park, consecutively--a full afternoon of fun. Bring a picnic lunch if you like, and join with Floating Homes and the rest of the Seattle community at the maxi mini-park dedication celebration.

City officials and Eastlake neighbors and friends will be on hand Sunday afternoon, June 27th, beginning at 2. JOIN THEM FOR A SPLENDID DAY IN THE NEW MINI-PARKS.

mini-park at Lynn Street

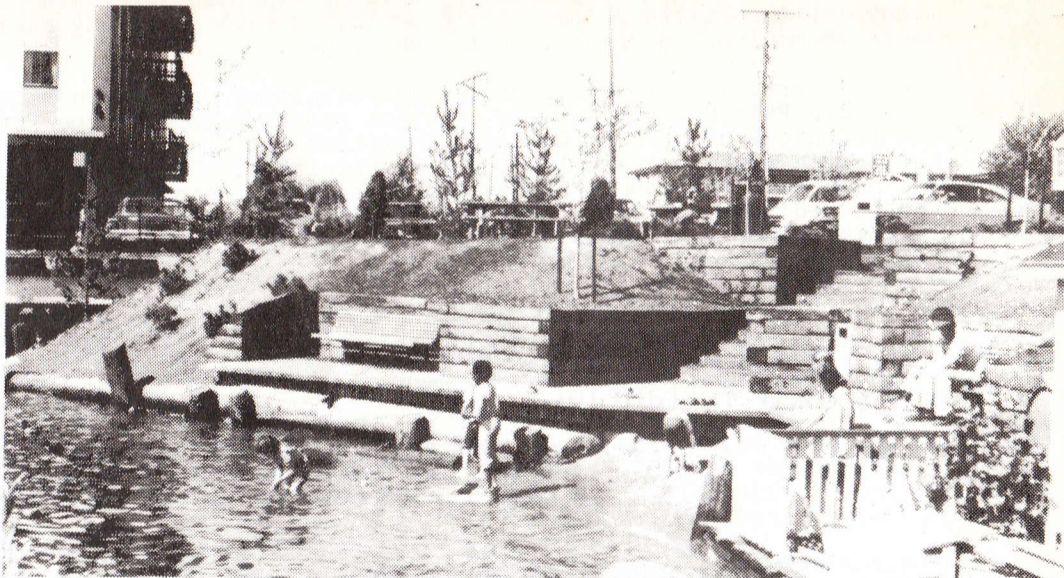


photo by Greg Smith

Courtesy Floating Homes Assn.

The Seattle Disposal Company will supply, free of charge, a full truck size dumpster for our neighborhood at the Lynn Street mini-park for the entire weekend in order that those interested in cleaning up their yards and block can do so.

Join your neighbors in Seattle's spring cleaning. For free litter bags, to give some help, or to get some, or just for more information, call

Ted Choi at 325-4934 or Paul Trush at 324-6201.

## plantsitter

Greetings Plant Fans! This is our last edition before we all vacate the premises...so...I thought I would cover vacation plant storage for those who don't have enthusiastic plantniks for neighbors.

Take some old towels. Put them (two or three layers will do) on the bottom of the bathtub. Get them soaking wet. Then water your plants well by putting them in a bucket of water. The water should be about an inch below the pot rim. When water beads begin to show up on the surface of the soil, the plant is thoroughly watered. Drain it well, and put it in the bathtub, spaced for air circulation.

Beth Means



more about noise

Well, well. Judging from the calls after our announcement of the noise study, Eastlake noise is indeed "bugging" people. The primary sources of irritation are the float planes and the police helicopters, the freeway (particularly towards the northern end of Eastlake), traffic along Eastlake and boat traffic. No complaints were received about noise from Eastlake businesses. Most irate were those awakened by early morning float plane takeoffs. Many calls were received from people up the hill in Eastlake and from our neighbors across the freeway and on lower Capitol Hill. The all time noise pollution award went to the float planes. Many thanks to those who called and wrote. Your comments will be used in mapping out our noise sources. We will be running the decibel count around the end of June, and still need people to volunteer to spend an hour or two taking decibel readings at various points in the Eastlake neighborhood.

Please call Beth Means at 325-5139 if you are willing to help out with this. A schedule is being worked out so that people can work at times most convenient for them.

A hearing will be held on the Seattle City Noise Ordinance on June 4. The Committee has turned the matter of float planes and boats over to the Director of the South King County Health Department to resolve jurisdictional questions. The ordinance will be amended once those questions are resolved. Comments should be directed to Randy Revelle, Seattle City Council.

On the positive front, Lake Union Air Service has announced that, in an effort to reduce noise, they have ordered special three-bladed propellers which have been used with success in New York City to reduce the noise of float planes. There is a one-year order backlog, but these will be installed as soon as they are available. In addition, they are putting out a manual for pilots on flight patterns and techniques for reducing takeoff noise.

Lake Union Air Service has offered to work with the Community as much as possible on this problem, and is to be commended for going to considerable expense in their effort to become good neighbors.

All those interested in noise problems and/or in working on the decibel count, please plan to come to a meeting Tuesday, June 22, at 3125 "E" Fairview Avenue East.

B. Means

pier 50-51 monolith and other desecrations

The Seattle Shorelines Coalition, a coalition of 13 community councils including Eastlake, and the Washington Environmental Council, in conjunction with the League of Women Voters, held a press conference Tuesday, June 1 to try to make the public aware of the proposed development for Piers 50 and 51 and the Planned Unit Development regulations for Lake Union, which would permit hotels and other non-water-dependent uses out over Lake Union.

The Coalition launched balloons on 170-foot strings to illustrate just how high the office tower out over Elliott Bay would be--that's three times the height of the viaduct. For more information on the provisions of the Shorelines Master Program, contact Beth Means, 325-5139, or Mark Clemmens, 324-4577. Citizens should send their comments to Mr. John Biggs, Department of Ecology, Olympia, 98504 with copies to the City Council before June 30, 1976.

B. Means

septembertest planned

Plans are underway for the annual Eastlake Community Fair Sunday, September 12. The community oriented fair features arts, crafts, music, food, and a gigantic rummage sale. The annual event gives Eastlake residents an opportunity to meet neighbors and raise money for the Eastlake Community Council, as well as giving residents themselves opportunities to make money.

Last year's Fair featured folksingers, blues and bluegrass music, sculpture, hand woven articles, carved garden sculpture, a puppet show, rummage sale, and dance. Persons interested in selling food are encouraged to check with the Seattle-King County Health Dept. regarding necessary permits. Republican and Democratic candidates for office can buy booth space to air their views and distribute pre-primary literature.

Tony Neupert, interim chairperson, is recruiting volunteers to assist with Fair activities. If a lot of people help out, the Fair can be more fun for everyone. Neighborhood artists, craftspeople and musicians are invited to participate. Booth spaces cost \$5, and people from both inside and outside the neighborhood are encouraged to take part. There will be an Eastlake Community Council booth where donations of craft items would be accepted, the sale of which would benefit the Council.

Volunteers are needed to assist with publicity, clean-up, selling of booth space, or (and here is where we really need help) with the rummage sale. If you are interested in helping, contact Tony at 329-3723. Paul and Priscilla Trush will again manage the colossal rummage sale. Give Paul and Cilla a call at 324-6201 if you have good rummage or want to volunteer. While you clean up on the 12th or 13th, you might set aside items to sell at the Fair. In any case, call Paul.

J. Pullen

homegrown restaurant

PJ's, a new neighborhood restaurant run by Eastlake residents, recently opened at 2305 Eastlake East. Restaurant backers hope to attract a clientele of neighbors interested in good tasting, moderately priced food.

PJ's breakfast menu includes whole wheat pancakes with fruit sauce, hash, a variety of omelettes, fresh fruit, marinated steak and a daily special. A special dollar lunch features soup, salad, and bread. A large assortment of sandwiches, soup, salad, and pasta complete the lunch menu. Dinner changes nightly depending on who is cooking. One evening recently, the dinner cook prepared Henry's Honorary Vegetables, Gin Steak with Rice and Oysters. Complete dinners are under \$5 per person. The owners have applied for a wine and beer license which they hope to receive in the near future. PJ's is also recruiting experienced waitresses.

The restaurant is owned and operated by the same group of individuals who manage the Eastlake Zoo Tavern, two doors down. Run as a cooperative, each employee receives the same salary and all tips are divided equally. The two-and-a-half-month renovation was also a cooperative effort with much of the labor donated by friends. Their collective toils created a pleasant, informal atmosphere devoid of the usual tangle of Boston ferns, new "antiques" and assorted gimmicks associated with new eating establishments. PJ's does feature a wall length wood design, fashioned of unfinished cedar; small tables; and homemade baked goods.

PJ's hopes to become a comfortable place for the community to enjoy a meal. Families are welcome. Restaurant managers are also considering serving espresso and inviting neighbors to play instruments after the dinner hour.

PJ's is one of the few restaurants open past midnight for late night dining. Breakfast is offered from midnight to 4 a.m. on weekends, Saturday and Sunday morning from 10 a.m. til 2 p.m. and weekdays from 6:30 to 2 p.m. Lunch begins at 11:30 a.m. and dinner is offered daily from 6:00 p.m. to 10 p.m. Eastlake Zoo patrons can enter PJ's sandwich bar by a hallway connected to the tavern.

Since this is the last newsletter for the summer months, I was especially pleased to report on a business that is run by Eastlake residents. While we appreciate all businesses that have chosen to locate in Eastlake, it is especially encouraging when our neighbors decide to locate here. A neighborhood-oriented business is the type of effort that furthers the sense of community in the Eastlake area and makes it an interesting and exciting place to live.

\*\*\*

Reminder: The Seattle Public Library Bookmobile parks at the foot of Lynn Street, across from the mini-park, every 2nd and 4th Friday of the month, from 3:45 until 4:15 p.m. If they don't have what you want, they'll get it.

J. Pullen

APPLICATION FOR MEMBERSHIP

New membership \_\_\_\_\_ . Renewal \_\_\_\_\_

If you live, work, or own property in the Eastlake area, and agree with the purposes of the council, please join us.  
\$2.00 individual; \$3.00 family or business.

Name \_\_\_\_\_

Address \_\_\_\_\_

Phone \_\_\_\_\_ . I would like to work \_\_\_\_\_