

# Eastlake Tomorrow Update

Help shape your neighborhood's future!

Issue 2

July 1996

## WHY EASTLAKE TOMORROW?

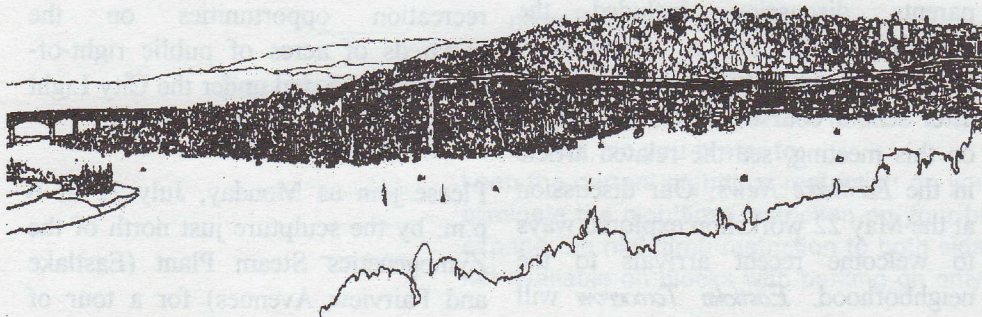
**E**astlake is a vibrant, livable neighborhood--but can we retain what we most enjoy, or make it even better? Street, park, and other public funds will be more available if we plan for them. The City comprehensive plan and design review process encourage neighborhood-based guidelines. And there is plenty that Eastlakers can do for ourselves to make this a good neighborhood in which to live, visit or do business.

## MAY 22 WORKSHOP A DELICIOUS SUCCESS

**A**bout eighty residents and business people came to the recent *Eastlake Tomorrow* open house and workshop. The drop-in format that started at 4 p.m. included lively discussions. Many new recruits emerged in the six breakout sessions that ended close to nine. City Council member Martha Choe and Neighborhood Planning Office director Karma Ruder outlined the City's efforts to encourage neighborhoods to plan, and were enthusiastic about our efforts here. The evening was partially funded by the

City, but the greater value was in donations, including your volunteer time and refreshments from **Pomodoro, Serafina, Tio's, 14 Carrot Café, Quick Stop, Rattler's Grill and Northwest Administrators. TOPS-Seward Public School**, a partner in planning, lent the historic Seward lunchroom, **G&H Printing** provided some of the meeting announcements, and **Bonneville Broadcast Group (KIRO-Radio)** lent its public address system and provided a 20 foot banner. Watch for another big event in the fall.

Whether or not you attended the workshop, there are plenty of opportunities to learn about what's going on in your neighborhood and to get involved. See pages 2 and 3 for the latest on each planning team.



*Have you ever lived in a small town? You do now, you know. Oh, it's not incorporated, and no road signs announce the town borders. But it's here. Eastlake, a community with a heart and a conscience, its own tiny budget, town meetings, and a growing number of volunteers who are willing to stand each year and say, "We care; we'll give a few hours a month to the neighborhood; count on us."*

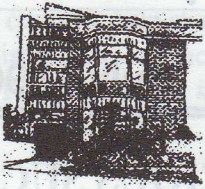
--Eastlake apartment owner and resident, Dick Arnold

## Read all about it!

Want background on *Eastlake Tomorrow*? For specific documents questions or comments, call coordinator/organizer Chris Leman at 322-5463, or e-mail <cleman@oo.net>. Also, a library of planning documents is on reserve courtesy of Lake Union Mail, 117 E. Louisa St. (ask at the counter), and an updated list of meetings is posted in the window. Documents and announcements -- including the latest upcoming meetings -- are also available electronically on the *Eastlake Tomorrow* web page: <http://oo.net/oo/ET>. Questions? call web page manager Daniel Solomons at 720-6313 or e-mail <daniel@oo.net>.

*Eastlake Tomorrow* is a broad coalition of organizations, business people, property-owners, and residents who--with some City funds but mainly with donated time and resources--are identifying immediate concerns and setting goals for more detailed work this winter. Based on priorities identified through community meetings, surveys, and other public input, six planning teams are exploring community design, open space, a north gateway, town center improvement, transportation, and the issues of promoting diversity, renovating Seward School, and developing a Community Center.

CONTINUED INSIDE...



## Community Design project

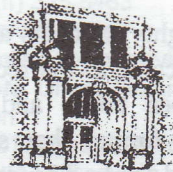
### Eastlake Counts July 9-19

We all know that this is a terrific neighborhood--but what gives it such special distinction? You've probably driven or walked up and down certain streets a thousand times, but have you taken time to discover the details that make up the street where you live or work? Now's your chance.

The community design planning team needs your help in a block-by-block inventory to use in developing guidelines for residential and commercial projects in Eastlake. Pairs of volunteers will be taking to the streets in mid-July for an up-close survey of the details that make us Eastlake. Each pair (most consisting of a resident and a member of the local business community) will be assigned one block (or more if they wish). After an orientation meeting you'll be on your way for two hours of neighborhood discovery.

Please make every effort to attend one of our special event inventory days: Wednesday, July 10 (5 to 7 p.m., meet at 2335 Eastlake Avenue East) and Saturday, July 13 (10 a.m. to noon, meet at 2335 Eastlake Avenue East). Be sure to be on time for the brief orientation. If you cannot attend the orientation, we will try to schedule another one for you--but call soon. Once assigned an inventory partner and block and after receiving an orientation and inventory form, you are free to do your joint roaming any time between July 9 and July 19. To volunteer or to

ask any questions, call Dave Dykstra at 325-9101. Other meetings of the Community Design Planning Team will occur on July 9 and July 30--Tuesdays at 7 p.m. at 2335 Eastlake Ave. E. *Count on it!*



## Community Center, Diversity, and Seward School project

This planning team has focused particularly on ways to establish a community center--possibly in the renovation of Seward-TOPS public school. At a June 11 meeting chaired by Bob Geballe and attended by TOPS parents discussion included the reestablishment of a Community School, a community-run curriculum of after school courses. For more details on this meeting, see the related article in the *Eastlake News*. Our discussion at the May 22 workshop explored ways to welcome recent arrivals to the neighborhood. *Eastlake Tomorrow* will also cosponsor with ECC and the Eastlake Community Land Trust an exploration of how to discourage discrimination in housing and other aspects of neighborhood life. Please join us Tuesday, July 23, 6:30 - 8:30 p.m. at the Seattle Police Officers Guild, 2517 Eastlake Avenue E. To get involved in this planning team; call Bob Geballe at 328-3560.



## Open Space project

### Explore Public Open Spaces

The Open Space Planning Team thanks the 35 people who inventoried one or more of the neighborhood's publicly owned open spaces. More than 65 inventory forms were completed, exceeding our objective! The work was timely, and professionally done. If you still have a form, it is not too late to turn it in, to Lake Union Mail at 117 E. Louisa St.

Now we need your help in figuring out what amount and use of open space will best reconcile nature, recreation, economics, and other values. Many exciting ideas came out of the May 22 workshop. Should we reaffirm previous years' recommendations for more street-end parks and better care of the ones we have? Should we improve recreation opportunities on the hundreds of acres of public right-of-way under I-5 and under the City Light power lines?

Please join us Monday, July 22 at 6 p.m. by the sculpture just north of the Zymogenetics Steam Plant (Eastlake and Fairview Avenues) for a tour of highway and power rights of way; officials responsible for these spaces will be there, so we need a good turnout. And on July 13, July 27, and August 10 join Saturday work parties to explore these forgotten lands and to remove trash and save trees and shrubs from choking vines and weeds. The invasive plants include Himalayan blackberry, English Ivy, and clematis vitalba (evil relative of the clematis in your garden). On July 13 (9:30 a.m. to 1 p.m.) meet in the parking lot north of Remax Realtors, 3123 Eastlake Ave.); on July 27 (9:30 a.m. to 1 p.m.) meet in the parking lot near I-5 across the

street from the Zymogenetics Steam Plant; and on August 10 meet on the sidewalk where Boylston and Lakeview Avenues go under I-5. Wear old clothes and work shoes, and bring clippers, gardening gloves, a machete, or a small saw (or camera). Call 325-5463 for information about these events and the open space planning team.



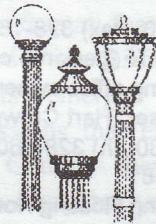
### *Town Center Improvement project*

Eastlake's mix of businesses and residents has always been a key to the neighborhood's vitality. The town center planning team is seeking to strengthen the business district in ways that attract more nearby customers or at least are compatible with the needs of residents. Discussion at the May 22 workshop was lively, with much about needed new businesses, and how to attract them.

Fifty-nine people have turned in the survey (get one at Lake Union Mail, or download from the web site). Top-ranked with 44 votes was joint advertising by Eastlake restaurants, closely followed by tree planting and tending along Eastlake Avenue (42), distinctively designed litter cans (40), and public art/wall murals (36). Tied for fifth at 32 votes were adopt-a-street cleanup, benches, more holiday and year-round lights, and a farmer's

market. At this point much of the volunteer interest is in a farmer's market, and there is a possibility of it becoming a reality this year.

What are we to make of Eastlake? With enough volunteers, we can do anything. Upcoming meetings are at 4 p.m. on Mondays at 14 Carrot Cafe on July 8 and July 23. Times may change, and an August meeting may be scheduled. To get involved, call Susan Kaufman at 328-3560.



### *Transportation project Time Of The Signs*

Mark up two signal victories for the 1994 Eastlake Transportation Plan! The City's agreed to put in a walk signal and tactile button across Eastlake Ave. on the south side of Louisa, and a right-turn arrow and blinking yellow for cars on Lynn approaching Eastlake Avenue from the east. See the article in the accompanying *Eastlake News* about your final opportunity to support (or oppose) these signal changes.

The neighborhood's transportation planning is focusing on the Eastlake Avenue median proposal and on Fairview Avenue traffic calming. With

sufficient support from abutting property owners, the landscaped medians could follow the sewer expansion that will rip up parts of Eastlake Avenue in the next year; to get involved, call David Young at 325-6835. The traffic calming effort, which is aided by a City neighborhood grant, will install safety measures along Fairview Avenue E. between Newton and Roanoke; call Mary Sue Galvin at 323-6439, with questions.

Transportation is always a hot topic for Eastlakers. There were 67 recommendations alone in the Eastlake Transportation Plan, which is available on our web site, or by calling 322-5463. To get involved in any aspect of transportation (including pedestrian or bicycling issues), call David Young at 325-6835 or attend the meeting at 10 a.m., Saturday, July 13 at Original Grounds, 2833 Eastlake Ave.



### *North Gateway project*

The North Gateway planning team is continuing to explore ideas for the triangle of land between Eastlake and Harvard Avenues and Allison Street. Members are examining the possibility of relocating to the triangle the historic clock that is now in front of the Lake Union Cafe building. The I-5 bridge, which towers over the site, could be painted, lit, and/or fitted to reduce noise. Ideas are welcome, and volunteers are needed. The next meeting is 7 p.m. on Thursday, July 9 at 2030 Minor Avenue E #301. Questions: 328-8588 or 323-1432.

*There is magic to great streets. We are attracted to the best of them not because we have to go there but because we want to be there. The best are as joyful as they are utilitarian. They are symbols of a community and of its history; they represent a public memory. On a great street we are allowed to dream.*

*--Allan Jacobs, Great Streets*

8

## Eastlake Tomorrow Update

Your views *count* to help shape your neighborhood. To volunteer or make suggestions, contact any member of the steering committee listed here, contact coordinator/organizer Chris Leman at 322-5463 or <cleman@oo.net>, or write to *Eastlake Tomorrow*, 117 E. Louisa St. #1, Seattle 98102

### Eastlake Tomorrow Steering Committee

To ensure representation from all major stakeholders and segments of the public, the *Eastlake Tomorrow* steering committee wishes to hear your views, especially about any suggested changes in the committee. Meetings of the committee are open to the public, with refreshments donated by the Eastlake Business Association. The monthly meetings (July 8, August 5, and September 9) are on Mondays at 2323 Eastlake, 4th floor, at 5:15 p.m.

The *Eastlake Tomorrow* effort is being coordinated closely at the City level with Neighborhood Planning Office staffers **Daniel Becker** (684-8073) and **John Eskelin** (684-0359), as well as with representatives of other public agencies.

### Eastlake Tomorrow

117 E. Louisa St. #1  
Seattle, WA 98102

▪ **Representing Friends of Lake Union & Olmsted-Fairview Park Commission**  
**Carol Anderson & Dave Moore** (shared position) (h) 325-5463  
e-mail: <folu@oo.net>

▪ **Representing social service agencies**  
**Gary Boots**, United Indians of All Tribes Foundation  
(w) 325-0070; (fax) 328-1608  
e-mail: <UIATF@eskimo.com>

▪ **Representing office owners**  
**John Crowser**, Hart Crowser  
(w) 324-9530; (h) 328-0604  
(fax) 328-5581

▪ **Representing Floating Homes Assoc.**  
**Mary Sue Galvin**  
(h) 323-6439

▪ **Representing small apartment owners**  
**Bob Geballe**  
2015 Franklin Ave. E.  
(h) 328-3560

▪ **Representing Eastlake Business Association**  
**Christopher R. Hughes**,  
Northwest Administrators  
(w) 726-3208; (fax) 726-3209

▪ **Representing Eastlake Community Council**  
**Deverick Martin**  
(h) 325-6835; (fax) 325-6923  
e-mail: <Deverick@EOR.com>

▪ **Representing Homeowners**  
**Lynn Poser**  
(h) 323-9257

▪ **Representing Renters**  
**Margaret Roberts**  
(w) 547-3423; (h) 324-1158  
(fax) 547-3747

▪ **Representing TOPS-Seward Public School**  
**Langston Tabor**  
(w) 329-5337; (h) 329-6279

▪ **ex officio**  
**Cheryl Trivison**, President,  
Eastlake Community Council  
(w & 24-hour messages) 325-8119  
(fax) 325-8722

# RESIDENTIAL PARKING ZONE (RPZ) SURVEY

Dear Neighbor:

The Residential Parking Zone (RPZ) has been in operation for two years and the Eastlake Community Council is wanting feedback from the community. The following survey will help us evaluate the effectiveness of the Residential Parking Zone (RPZ). The survey results will be tabulated and published in the September/October issue of Eastlake News.

Any changes to the RPZ must ultimately be approved by the Seattle Engineering Department (SED) and by 60% of the households on any affected block. If you want to pursue any changes to your block call: John Marek at Seattle Engineering Department 684-5069.

Only one survey response per household. Please fold the survey as indicated and return by mail to the Eastlake Community Council, 117 E. Louisa #1, Seattle 98102 or drop it off at Lake Union Mail (same address). If you have any questions call: Barbara Zegar 325-2139 or Carol Eychaner 324-1716. Thank you for your participation.

---

---

---

---

EASTLAKE COMMUNITY COUNCIL  
117 E. Louisa Street, #1  
Seattle, WA 98102



EASTLAKE RESIDENTIAL PARKING ZONE SURVEY QUESTIONS

1. Since the RPZ was implemented in the summer of 1994, what is the parking availability in your area like during the...

	<i>Better</i>	<i>Worse</i>	<i>Same</i>	<i>Don't know</i>
daytime (7:00AM-6:00PM)	_____	_____	_____	_____
nighttime (6:00PM-12:00AM)	_____	_____	_____	_____

2. Can you usually find a parking space that is within one block from your home during the...

	<i>Yes</i>	<i>No</i>
daytime (7:00 AM - 6:00 PM)	_____	_____
nighttime (6:00 PM - 12:00 AM)	_____	_____

3. Regarding daytime only: For blocks with parking on only one side of the street, what would you prefer the daytime restriction to be...

_____	2-hour limit?
_____	4-hour limit?
_____	no restriction?

4. Regarding daytime only: For blocks with parking on both sides of the street, what would you prefer your daytime restrictions to be...

_____	2-hour limit on one side of street and 4-hour on other side?
_____	2-hour limit on both sides of the street?
_____	4-hour limit on both sides of the street?
_____	no restriction on one side of the street/no parking without a permit on the other side?
_____	no restriction on either side?

5. Regarding nighttime only: The only parking restriction available for nighttime is the "No Parking Without a Permit", according to City law no hourly restrictions such as 2-hour or 4-hour parking limits are available. Given this, do you prefer to:

_____	keep the current nighttime restriction on your block?
_____	eliminate the nighttime restriction on your block?
_____	expand the nighttime restriction to both sides of your block? [This option is not available on blocks with parking on only one side.]

6. Do you have any general comments about the restrictions or the enforcement?

\_\_\_\_\_

\_\_\_\_\_

\_\_\_\_\_

\_\_\_\_\_

7. Please provide the following information...

Name: \_\_\_\_\_

Address: \_\_\_\_\_