



EASTLAKE TOMORROW UPDATE

Shape your neighborhood's future!

November 1997
Issue 4

NEIGHBORHOOD TO TALK AND TASTE DIVERSITY NOV 8

Photos of your family, neighbors, and coworkers are welcome at a community-wide diversity workshop and potluck Saturday, Nov. 8 from 9:30 a.m. to 1:30 p.m. at St. Patrick's, 2702 Broadway Ave. E. Prepare for a good time, and an informative one. Activities will explore what diversity means for Eastlake, and will help build a sense of community. You will get to know your neighbors and their human concerns. Discussion topics are up to you, but could cover affordable housing, a community center, and ties with our business community, which is ethnically and economically very diverse.

Come also to enjoy ethnic foods. If you can, bring a food item, especially one related to your ancestry. Jack Smith announced at a recent planning meeting, "I'll bring

Wonder Bread and peanut butter!" For questions, or to contribute photos, contact Sandra Henricks at 322-9759, sanhen@wport.com.

COFFEE AT SERAFINA TO DRAFT MAIN STREET GOALS DEC. 10



An appreciative 14 Carrot Cafe audience of business owners October 8 heard Seattle Times columnist Stephen Dunphy make the case for getting organized as a business district. Main Street planning team coordinator Susan Kaufman will host the next gathering Wednesday, Dec. 10 at her own Serafina, 2043 Eastlake Ave. E., beginning at 9 a.m. Actions for the City as well as for the neighborhood will be recommended. Join us – and before, send in your suggestions to Main Street, c/o Eastlake Tomorrow, 117 E. Louisa St. #5, Seattle 98102, or cleman@oo.net.

BOUNDARY, URBAN VILLAGE DISCUSSIONS

A September 17 public meeting held at NOAA discussed Eastlake's urban village designation and planning boundary. The 1994 Seattle comprehensive plan recommended that Eastlake be a residential urban village, a designation that most closely matches the neighborhood's residential and commercial zoning, land use, and densities. Eastlake's community design planning team also recommended this.

Most discussion focused on the planning team's recommendation that Eastlake's southern planning boundary include all of the shoreline properties between Zymogenetics and Newton Street, including Terry Pettus Park, NOAA, Lake Union Dry Dock, Zymogenetics, and the waterway and trestle in front of Zymogenetics. These properties are traditionally and functionally part

PUBLIC MEETINGS

November 8 (Saturday) 9:30 a.m. to 1:30 p.m. at St. Patrick's Parish Hall, 2702 Broadway Ave. E. (elevator at front of building). Diversity Workshop and Potluck.

November 10 (Monday) 5:30-7 p.m. at Seattle Center Flag Pavilion. View the latest from Eastlake Tomorrow and other neighborhood planning efforts at this citywide event.

November 13 (Thursday) 5:15 p.m. at Hart Crowser, 1910 Fairview Ave. E. Eastlake Tomorrow Steering Committee.

November 15 (Saturday) 10 a.m.-12 at Lake Union Mail, 117 E. Louisa St.—Survey Amnesty Day (see article). 11 a.m.—Dedication at the Lakeview-Melrose trail (Maps at Lake Union Mail, or call 322-5463.). Refreshments at both events.

November 17 (Monday) 7 p.m. at Seattle Police Officers Guild, 2517 Eastlake Ave. E. Open space planning team public meeting.

December 8 (Monday) 7 p.m. at Pocock Rowing Center, 3320 Fuhrman Ave. E. Public meeting on highway noise

December 13 (Thursday) 5:15 p.m. at Hart Crowser, 1910 Fairview Ave. E. Eastlake Tomorrow Steering Committee

All of the above meetings are wheelchair accessible; for further accommodation for the disabled, call 322-5463.

Eastlake Tomorrow is a volunteer-led neighborhood planning effort involving a broad coalition of residents, organizations, business owners and employees, and property owners. With some city funds (but mainly with donated time and resources) the neighborhood is identifying areas of consensus for needed action by government, and self efforts of our own.

of Eastlake, but the preliminary recommendation in the comprehensive plan split them off from those just across Fairview Ave. E. and put them into South Lake Union planning.

Boundary preference forms were handed out at the meeting; all those received back so far from affected and nearby businesses and property owners have supported the more southern boundary as recommended by the planning team. This boundary appears to be the same as has been proposed by the South Lake Union Planning Organization (SLUPO), although we will be confirming this. A subsequent meeting of the Eastlake Tomorrow Steering Committee adopted this boundary as its tentative draft recommendation, pending further discussions with affected property owners and businesses, as well as with SLUPO.

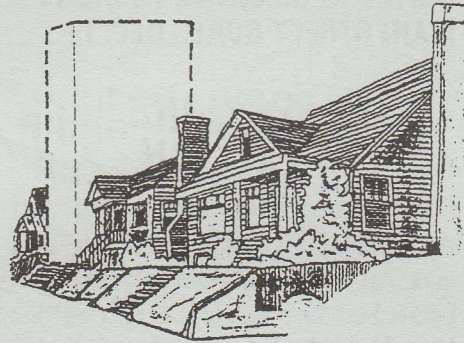
The comprehensive plan also inexplicably omitted from Eastlake's preliminary boundary one half of the La Amourita cooperative and two brick apartment buildings at the north end of Franklin Ave. The community design planning team recommends including these properties in Eastlake's boundary.

For copies of the September 26 Eastlake Tomorrow letter to SLUPO, analyses of the boundary alternatives, and the preference form, write to Eastlake Planning Boundary, 117 E. Louisa St. #5, Seattle 98102. For questions, call Carol Eychaner, 324-1716.

EASTLAKE COUNTS (HOUSEHOLDS) AND CONSIDERS DESIGN ISSUES

The City's 1994 comprehensive plan established targets for household increases in urban villages like Eastlake. Our target was a net increase of 380 households over the 2437 in the 1990 census. Eastlake's

growth since 1994 has been 169 new households; we are more than halfway to the goal of 380 new households, and the target year of 2014 is still a long way off. We may be even closer if the City counts the 94 net households added between 1990 and 1994 (the comprehensive plan's starting point was July 25, 1994, although the baseline numbers came from the 1990 census).



The community design planning team is analyzing these growth rates. We are looking particularly at where growth is most beneficial, what to do if growth exceeds our allocated rate, and whether smaller projects could be encouraged where the zoning might allow larger ones. At the Sept. 20 showcase, some participants suggested increasing zoning heights or granting height exceptions in exchange for other amenities; others remember the fierce debates of the 1970s and 1980s that produced our current zoning heights and suggest that we stay the course. The planning team will issue a report and recommendations for public comment in January.

We are hiring a consultant to develop possible design review guidelines and other tools for public discussion in March. The community design planning team welcomes your suggestions and involvement; meetings are third Thursdays with the next Nov. 20, 6:30 p.m. at 3100 Fairview Avenue E. #101 (or enter from the

Allison St. sidewalk). For questions, call Dave Dykstra at 325-9101.

EASTLAKE ECOLOGY?!!

The open space segment at the Sept. 20 showcase event debated ecology – do we have it? do we want it? how can we get it? Dave Moore, devoted gardener of some of our most neglected public spaces, keyed in observing: "It's hard for the tenderer species to survive." From homeless people to wildlife habitat to making it easier for pedestrians, many of the simpler ways of doing things face obstacles such as trash, weeds, noise, and traffic. Participants valued the natural spaces such as the p-patch and the street parks, and "organic growth" whereby someone puts out a couple of unwanted boards and they soon turn up elsewhere as "yard art or some other use."



Summing up, open space co-chair Miale Jose suggests that "neighborhood planning foster the tender, organic growth along with the existing hustle and bustle." If you'd like to join in this conversation, contact Jose at 720-9892, or come to the Nov. 17 meeting of the planning team.

SURVEY AMNESTY DAY NOV. 15

Dust off that old survey form or fill out a new one at Lake Union Mail and guiltlessly enjoy free coffee and pastry between 10 a.m. and noon Saturday, Nov. 15. Can't make it? You can still get a survey by calling 720-9892 (open space), 270-0072

ext 21 (north gateway) or 322-5463 (boundary and main street). Thanks to prize donors for the open space survey drawing, and congratulations to winners: Steve Conklin (Java Jive), Marilyn Dillard (Louisa's), N. Gaines (Bridges), Jennifer Leach (Bridges), Rich Haag (Eastlake Zoo), Julie Hovley (Rattler's), Scott Mertel (Serafina), Sharon Smith (Video Quest), and Ron Williams (Margi and David Salon).

NORTH GATEWAY BEING RESTORED

Landscape renovation is underway at the north gateway site (triangle between Eastlake, Harvard, and Allison streets). Volunteers are needed beginning at the end of October to help with plantings and asphalt enhancements. Also, the north gateway planning team is compiling ideas for art and other improvements from the September 20 showcase event. To volunteer, obtain a packet from the showcase event, or find out about the next planning team meeting (usually the second Tuesday of each month), call Jill (270-0072 ext. 21) or Anne (323-1432). Information is also available at <http://oo.net/oo/et>.

TRANSPORTATION SOLUTIONS AND VOLUNTEERS SOUGHT

The Sept. 20 showcase saw lively debate on transportation. People want more frequent buses, safer pedestrian crossings, and more benches for those walking. And they are concerned about highway noise and potential impacts if light rail comes to the neighborhood. The transportation planning team has drafted for your comment 35 recommendations on traffic management, transit, bicycle and pedestrian conditions, noise, and the business district; copies available at Lake Union Mail, 117 E. Louisa, <http://oo.net/oo/et>, or by calling

322-5463. The 1996 survey showed strong support for restoring our cobblestone streets, so the transportation and community design planning teams are beginning a study staffed by a UW student volunteer. On the study, call Carol Eychaner, 324-1716. A subcommittee has also been formed on highway impacts (see below).

To make suggestions or get involved in any aspect of transportation, contact planning team coordinator Karl Kumm, 860-4151. Or drop by a transportation planning team meeting (first Thursdays). The next ones (Nov. 6 and Dec. 4) are at 7 p.m. at Karl's houseboat, 2239G Fairview Ave. E. Volunteers are particularly needed to work on bus and pedestrian issues, Eastlake Ave. planted median proposals, and Fairview traffic calming.

DEC. 8 MEETING TO QUIETLY EXAMINE HIGHWAY NOISE

Noise from Interstate 5 has been a major problem to many. The problem has been studied extensively, but action is only beginning. Now residents, businesses, and property owners have formed a subcommittee of the Eastlake Tomorrow transportation planning team to focus on highway impacts, and have drafted this mission statement:

In order to improve the quality of life, health, and economic viability of the Roanoke Park, Portage Bay, and Eastlake communities, we seek to reduce freeway related noise, air and water pollution and visual blight through the best available noise and pollution reduction technology and through possible system modifications. We also seek to mitigate community impacts for the noise and other pollution that cannot be eliminated.

The subcommittee is developing recommendations, urging noise-impacted property-owners to seek reductions in their tax assessments, and helping with a public meeting on Monday, Dec. 8, 7 p.m. at the Pocock Rowing Center, 3320 Fuhrman Ave. E., to which our legislators have been invited. To receive or comment on the subcommittee's draft mission and objectives, call Karl Kumm, 860-4159.

NIGHTLY CLOSURE OF LANES A QUALIFIED WIN

The unfortunate design of the I-5 ship channel bridge reflects noise from the express lanes onto homes and businesses below. An Eastlake Tomorrow priority dating to 1992 has been to reduce the round-the-clock hours of operation of the express lanes. A major step occurs Nov. 3, when the Washington State Department of Transportation (WSDOT) will close the lanes between 11 p.m. and 5 a.m. Thanks are in order, to John D. Okamoto, WSDOT District Administrator, 15700 Dayton Ave. N., Seattle, WA 98133-9712. But the ET noise subcommittee also suggests that the closure be lengthened one hour on each end, closer to the 10 p.m. to 7 a.m. quiet period recognized by the Seattle noise ordinance.

BUSINESSES, RESIDENTS CLEAN UP

We've heard your calls for better stewardship of our streets, sidewalks, and green spaces. So the main street and open space planning teams are asking you to join in adopting a block face or a park. Adopters will have access to City equipment and debris removal, and others who have volunteered to help with their area. Specialties include litter, tree and plant care, and graffiti removal – or you can do it all. Local employers

that are cleaning up include Away from Here Adventures, Berger Partnership, Gilmore Research, Lake Union Mail, Mirage Marketing, NOAA, Judith Stoloff Associates, and Thomas/Lane Consultants. Is your employer involved yet – or are you? To adopt a street, call 329-2696; to adopt a park, tree, or planting strip, call 517-4105.

SHOWCASE WAS A SUCCESS; WHAT'S NEXT?

Lots of new faces crowded the Sept. 20 showcase event to speak up about Eastlake's future. The six planning teams staffed exhibits and moderated roomwide discussions (summarized in articles above). Many thanks to Hart Crowser for hosting the event and for coffee and tea; Eastlake Business Association for soft drinks; and Louisa's Bakery for pastries.

During the next few months, the planning teams will use this input (and any more you can provide them) to produce draft recommendations for our next major publication. Then (tentatively March 14), a Plan Options Fair will solicit more public comment. With input from you and city agencies, the Steering Committee will revise the recommendations and consolidate them

into a draft neighborhood plan for submittal to the City in April 1998. Of course, the City Council will hold a public hearing, but it is best to get involved earlier. By providing your suggestions and feedback now, you can help shape the plan we submit to the City. The City is most likely to approve a neighborhood plan that has broad support among diverse stakeholders.

STEERING COMMITTEE SEEKS YOUR IDEAS

Eastlake Tomorrow is governed by a broad-based Steering Committee that represents ten stakeholder groups:

Apartment owners (Ted Choi, 325-4934 tedchoi-tam@juno.com);

Eastlake Business Association (Chris Hughes, 726-3208);

Eastlake Community Council (Barbara Zegar, 325-2139);

Floating Homes Association (Mary Sue Galvin, 323-6439 galvin.m@ghc.org and Bill Keasler, 325-8017, wak@netcom.com);

Friends of Lake Union/Olmsted-Fairview Park Commission

(Mary Kay Gillespie, 328-2161 vmdmkg@vmmc.org and Kristin Thomas, 324-0386);

homeowners (Lynn Poser, 323-9257);

office building owners (John Crowser, 324-9530

jcc@hartcrowser.com);
renters (Margaret Roberts, 324-1158 MRobertsMC@AOL.com);

social service providers

(Vicki Jones, Childhaven, 464-3925 and Gary Boots, United Indians of All Tribes, 325-0070, bootman@eskimo.com);

TOPS (Gibb Damman, 367-1024 gibdzn@u.washington.edu and Jay Pickering, 632-5181 jayp@mithun.com).

The Steering Committee also has a seat for each of the planning teams, whose contact information is in the articles above.

FOR MORE INFORMATION

Documents about the Eastlake Tomorrow neighborhood planning process are available for public review at Lake Union Mail (117 E. Louisa St.); the Floating Homes Association (2329 Fairview Ave. E.); and at <http://oo.net/oo/et>. You also can contact any member of the Steering Committee, others listed throughout this newsletter, or executive coordinator Pat Strosahl (382-0594; pstros@AOL.com) and organizer Chris Leman (322-5463; cleman@oo.net).

Eastlake Tomorrow

117 E. Louisa St. #5
Seattle, WA 98102

BULK RATE
U.S. POSTAGE
PAID
Seattle, WA
Permit No. 1046

Eastlake Tomorrow North Gateway Art QUESTIONNAIRE

The North Gateway committee has gathered a number of ideas from the community, many of which are summarized below. Please help us by rating **your top 5 criteria for art** at the North Gateway area*.

(*triangle between Eastlake, Harvard, and Allison streets)

1 = most important and 5 = least important

PRIORITY CRITERIA:

- Relates to the freeway traffic use
- Relates to a crossroads idea
- A "Neighborhood Gate" theme to literally represent a "gateway"
- Makes me laugh or smile
- Makes me think about or see familiar things in a different way
- Introduces themes of Eastlake/Portage Bay/Roanoke Park neighborhoods
What theme/s come to mind? _____
- Nostalgic: reminds me of how things used to be
- Introduces the business district of Eastlake
- Refers to historic uses of area
- Refers to water or earth elements (fire, air, earth)
- Relates to the shapes and spaces of the freeway structure
- Increases lighting in the area to improve safety and enhance appearance
- Is artistically "cutting edge"
- Is artistically conservative
- Is created by a community artist/s
- Is created by a Seattle artist
- Is created by a nationally known artist
- Depicts realistic contemporary life
- Is a "walk through" environmental work
- Is "interactive" and invites neighborhood hands-on use
- Is oriented toward kids
- Refers to freeway noise
- Other

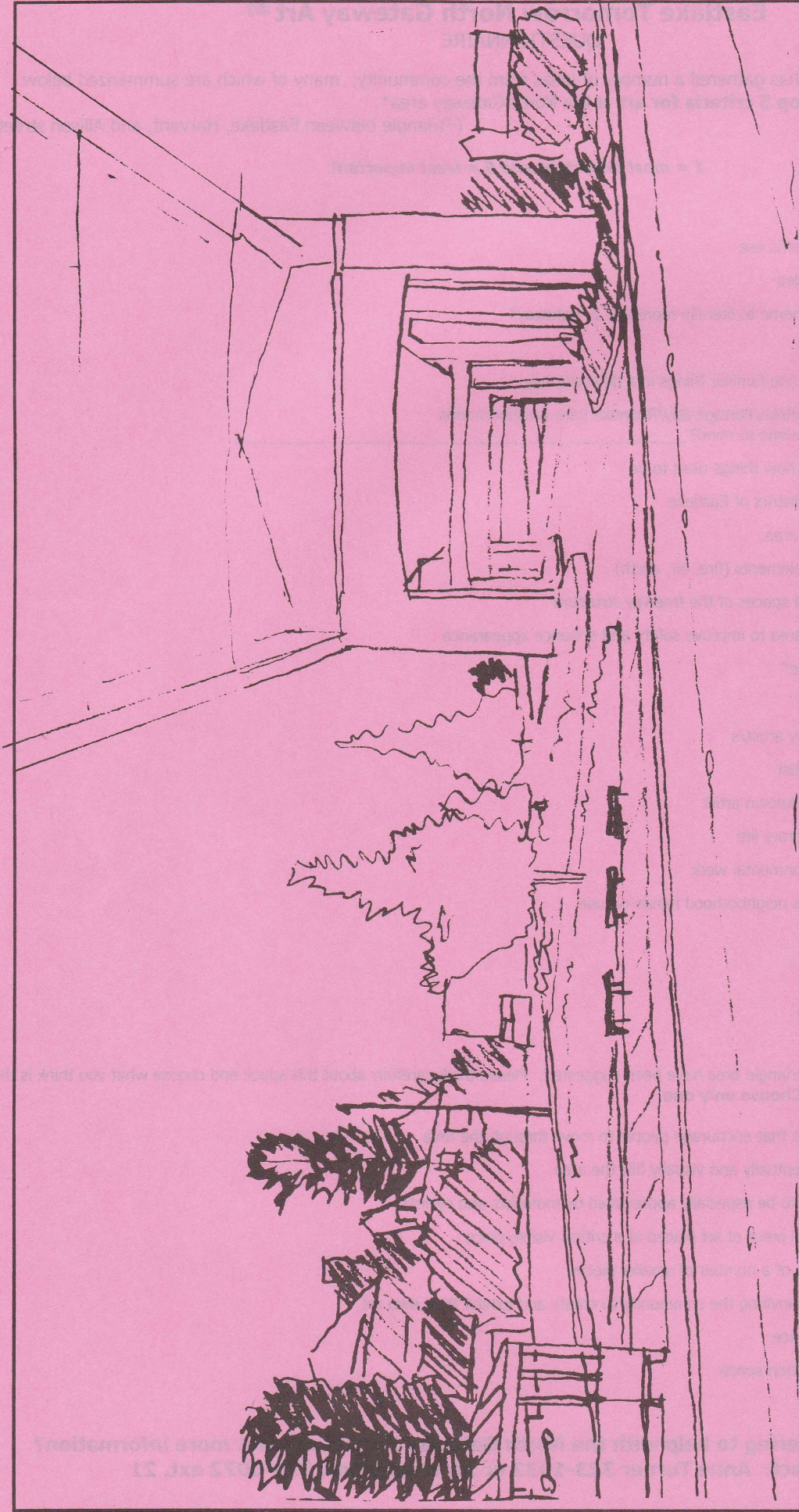
OVERALL USE:

Several uses of the North Gateway triangle area have been suggested. Please think carefully about this space and choose what you think is the best approach to using the space. **Choose only one.**

- A "Walk Through" element that encourage people to move through the area
- One big project that conceptually and visually fills the area
- A drive-by work designed to be especially appreciated by motorists and cyclists
- A piece of representational piece of art placed at a critical visible place
- An "art garden" consisting of a number of smaller pieces
- A "community art" vehicle inviting the community to create and exhibit their own art
- A more park-like green space
- A skateboard/other recreation space

**Interested in volunteering to help with the North Gateway Project or want more information?
Please contact: Anne Turner 323-1432 or Jill Wiedenhoft 270-0072 ext. 21**

Please mail or hand deliver to: Lake Union Mail 117 E. Louisa #5, Seattle, WA 98102



North Gateway Art Placement Project Draw Your Ideas For A Gateway Art Work In The Triangle

- *Tell us what you would to see as a gateway art work.*
- *Make notes! Is it funny or serious? Abstract or Realistic? How Big? What Materials?*

Eastlake Tomorrow Neighborhood Plan

North Gateway Planning Team