

July/August 2000

Serving the Eastlake Community

EASTLAKE

N E W S

Meetings

Several meetings are planned for the next few months.

Please review the adjacent column for more information



Visit our new web site

<http://eastlake.oo.net>

Special thanks to Daniel Solomons, owner of oo.net for graciously hosting our site.

Meetings and Events

July 15 (Saturday) 2 p.m. Dedication of Fairview-Olmsted Park (2900 Block of Fairview Ave. E.).

August 7 (Monday) 6:30 p.m. Public meeting to unveil proposals for Rogers playground area. Meet first at park, then move to TOPS-Seward library.

September 6 (Wednesday) TOPS-Seward library, 2500 Franklin Ave. E. Public meeting to review City follow-through on Eastlake's neighborhood plan. Open house begins at 6:30 p.m.; presentations and public comment are from 7 to 9.

September 26 (Tuesday) 11 a.m. Dedication of Good Turn Park—3149 Fairview Ave. E. (Martin street-end at Lake Union).

October 10 (Tuesday) 7-9 p.m., TOPS-Seward library. ECC annual meeting and elections.

Your ideas needed on the Louisa Arborway

The Louisa Arborway, which connects Eastlake and Yale Avenues, is described in the Eastlake Neighborhood Plan as "a much-used walkway with enticing and plush rose bushes." The plan goes on to recommend subdued lighting and other enhancements. The Eastlake Community Council, with the support of the Stockley Memorial Fund, will be holding two public meetings to recommend improvements while maintaining its informal, romantic character. Lead Pencil Studio has been retained to help in the design process.

WE WANT YOUR IDEAS! The first public meeting was Tuesday, July 11, at Louisa's Bakery & Café. Committee members Carolyn Krall, Dina Moreno, Paige Stockley, and Barbara Zegar thank Michael and Luise Mooney for providing Louisa's for the meeting. If you missed the meeting, please provide your suggestions via e-mail (krallc@oo.net), phone/fax 720-4792, or drop written comments at Lake Union Mail, 117 E. Louisa.

Eastlake News
is a bi-monthly
publication of
the Eastlake
Community
Council, to
inform the
community of
issues concerning
the Eastlake area

**Eastlake Community
Council
Board Members**

Owen Reese
President

Marilyn de Guzman
Michael de Guzman
Vice President
(shared position)

Victoria Carter
Secretary

Mary Lou Pederson
Treasurer

Judy Smith
Advertising

Connie Lind
Volunteer Coordinator

David Huber
Jim Reckers

Send stories, letters
and ideas to the
**Eastlake News 117 E.
Louisa St. #1, Seattle
WA 98102**

Display Advertising?
Call **Judy Smith**
709-8631

Anthony Vincent
Desktop Publishing
Layout Production



Business Notes

This neighborhood was noisy enough without the recent crowing of a stray rooster lording over rooftops near Garfield Street (perhaps a leftover from the closing of Pharaoh's tavern?). When accountants at the **Bill & Melinda Gates Foundation** noticed the rooster across Eastlake Avenue, they underwent a Superwoman-like transformation. In a 20-minute struggle three joined resident Shon Spirulina to wrestle the wily rooster into a cage lent by Eastlake Veterinary Clinic. The rooster now happily greets the dawn on a farm south of Mount Rainier, far from dozing Eastlakers. ... Recently moved to the neighborhood at 1938 Fairview Ave. E. (676-5300) is **R.D. Merrill**, a family-owned company founded in 1916 that owns or co-owns 40,000 acres of timberlands but also has branched out into assisted living and property development. ... Also now in the same building is **Nimble Technology, Inc.** (268-8000, www.nimble.com), which provides a next-generation data integration and information management platform and a suite of powerful XML-based tools and applications for query processing, data integration and Web publishing. ... **Pete's Supermarket** (58 E. Lynn, 322-2660), already known throughout the Northwest for its wines (more than 1200 labels) now also has an extraordinary cheese selection—90 varieties, many of them from Italy, Spain, and Britain. Petes' hours are Monday-Saturday 7 a.m. to 9:30 p.m.; Sunday 9:30 a.m. - 9:30 p.m. ... **Pomodoro Ristorante** (2366 Eastlake Ave, 324-3160) still hasn't gotten that promised thank-you letter from the White House for cooking for President Clinton when he was in town a few years ago...

(come on, Eastlakers, doesn't someone have the connections to make this happen?). Pomodoro now has a web site, www.pomodoro.net, and will soon be offering cooking lessons on it. ... **Goodwin Architects** (568-0818) has arrived at 3202 Harvard Ave. E. The firm has done a lot of residential and some commercial design. ... **Tour International** (3103-1/2 Eastlake Avenue, East 709-4475, info@tourinternational.com) is a travel agency and tour operator for Europe and Asia, specializing in helping English-speakers explore the former USSR republics. Its web site, www.tourinternational.com, has a lot of information about Russian travel. ...

Send your news to business editor Chris Leman (cleman@oo.net), 85 E. Roanoke Street, Seattle 98102.

Please send e-mails also to business reporter Virginia Huber (vjhuber@halcyon.com).

Welcome Aboard!

Connie Lind is our new volunteer coordinator helping to organize volunteer efforts for the many varied projects and functions in our area.

To place yourself on the volunteer list and tell us any preferences, just email Connie at clind42161@aol.com.

Continued from Front Page...

Colonnade Park now in voters' hands

Thanks to your letters and calls, it looks like the City Council has accepted the Mayor's recommendation to put \$1.77 million on this November's ProParks levy for Colonnade Park (under I-5 just west of the stairs). If the voters approve, this unlighted, gullied, and trash-strewn area will be transformed into a safe and popular park reconnecting the Capitol Hill stairs to the Lake Union area. But there's more to do (questions? Chris Leman, cleman@oo.net, 322-5463):

- Urge the Washington State Department of Transportation to submit an August 2000 application for TEA-21 federal nonmotorized funds to build stairs and a multi-use pathway between Lakeview Blvd. and Franklin Ave. E. Write to Regional Administrator John Okamoto, WSDOT, P.O. Box 330310 MS-101, Seattle 98133-9710, or Okamoto@wsdot.wa.gov.
- Urge the Department of Neighborhoods to allocate \$75,000 from the September Opportunity Fund for a topographic and land survey of the Colonnade Park area under I-5. As the Opportunity Fund requires, this request is time-sensitive: a survey is needed for design and fund-raising and cannot be funded in a timely manner through any other funding sources. Without a survey, it is near-impossible for the community or public agencies to proceed with planning and design. Address: Anne Fiske-Zuniga, DON, 700 Third Avenue, 4th floor, Seattle 98104; anne.fiske-zuniga@ci.seattle.wa.us., with a copy to Councilmembers Jim Compton (jim.compton@ci.seattle.wa.us) and Richard Conlin (richard.conlin@ci.seattle.wa.us), or by U.S. mail to 600 Fourth Avenue, 11th floor, Seattle 98104.
- Urge the Seattle Transportation Department to allocate Neighborhood Street Funds to install a curb bulb and pedestrian-actuated stop light to make a safer crosswalk at the intersection of Lakeview, Boylston, Newton St. and the I-5 on-ramp. Write to SEATRAN Director Daryl Grigsby, 600 Fourth Avenue, 4th floor, Seattle 98104-1876, daryl.grigsby@ci.seattle.wa.us, with a copy to City Councilmember Richard McIver, 600 Fourth Avenue, 11th floor, Seattle 98104-1876, richard.mciver@ci.seattle.wa.us.

Good Turn Park to be dedicated Sept. 26

Please join us at 11 a.m. Tuesday, Sept. 26 to dedicate Good Turn Park. This shoreline park is dedicated to the memory of Homer Bergren and Jim Nordstrom, who footed the entire cost of the first phase. With a naturalistic design by Tom Zachary, the park was completed last year with \$14,832.33 in Seattle Neighborhood Matching Funds and more than \$65,000 in donated cash, materials, and labor from many, many businesses and volunteers. Volunteers are needed to keep the park in top shape; call Marcella Harrold, 325-5251. Also wanted are photos of wildlife; for example, a heron was recently seen in the park.



2366 Eastlake Ave. E.

324-3160

*Open seven nights a week for dinner
and late night dining
Newly remodeled • Free garage parking*

Eastlake Community News

Land Trust seeks sites, volunteers

The Eastlake Community Land Trust asks your help in identifying sites for construction or renovation of some permanently affordable subsidized housing units. With our partner the Capitol Hill Housing Improvement Program, we have researched many properties, but so far have been outbid by commercial developers. Sellers can be paid in cash and enjoy tax advantages for selling to a nonprofit; there is also the satisfaction of ensuring the survival of affordable housing for generations of Eastlakers. Please let us know if you or a friend would like to discuss sale (or donation!) of a property. Volunteers for our board of directors are also needed; we are currently looking for a treasurer and a secretary. Contact co-chair Beth Boram, 325-3276, bethb@commongroundwa.com.

Come Sept. 6 to review City follow-through on the Plan

The Eastlake Neighborhood Plan and a follow-up volume summarizing the City's actions up to January 2000 and listing the neighborhood's priorities is available for review at many neighborhood businesses and on the Eastlake web site. - On Tuesday, Sept. 6 in the TOPS-Seward School library, a 6:30 open house and 7 p.m. public meeting will review the results so far. If you have questions or concerns, or can volunteer to help, we would love to hear from you. If a contact name is not already listed here, contact Chris Leman (322-5463, cleman@oo.net) for suggestions.

Governance. The Eastlake Neighborhood Plan Stewardship Committee has seats for the Eastlake Business Association, Eastlake Community Council, Eastlake Community Land Trust, Floating Homes Association, NOISE, Eastlake/Roanoke Park/Portage Bay/North Capitol hill Business Association, Parents of TOPS, Portage Bay/Roanoke Park Community Council, Olmsted-Fairview Park Commission, a social service provider, and an apartment owner/manager. In June 2000, the Stewardship Committee wrote requesting that the Executive Branch make changes (noted below) to bring its Eastlake implementation plan more into correspondence with the Eastlake Approval and Adoption Matrix that the City Council unanimously adopted in April 1999. Councilmembers Jim Compton and Richard McIver have accepted the responsibility as City Council stewards for our neighborhood plan, so especially need to hear from you.

Housing. In 1999 the City Council amended the citywide Comprehensive Plan to permit a departure from per-unit ceilings in the spending of funds for low-income housing projects in neighborhoods that lack subsidized housing because of high property values. The Office of Housing has drafted a promised study of existing barriers to the use of City funds in such neighborhoods, and is considering the Eastlake proposals as a part of its revision of the Seattle Housing Levy Administrative and Financial Plan [contact: Beth Boram, 325-3276, bethb@commongroundwa.org].

Franklin Green Street/Rogers Playfield. Eastlake's Green Street was the first outside of downtown. With its trees and shrubs, benches, chess table, and kiosks, this virtual park is beautifully complete with the help of School District and City Neighborhood Matching grants and incredible numbers of volunteer hours. Under a separate Neighborhood grant, a planning process is underway for the area of Rogers just east of the tennis courts, with the next public meeting on Monday, August 7, 6:30 p.m. at the site, then in the school [contact: Laurie Stusser, 323-4556].

Lynn Street park. A Parks Department public planning process has produced a renovation design for this street-end park, to be paid for partly out of its own budget, and partly by SEATRAN; in May the Department approved a request from the Olmsted-Fairview Park Commission for an additional \$38,800 from its Neighborhood Response Fund to help pay for accessibility improvements, and irrigation and planting restoration [contact: Lynn Poser, 323-9257]. In June the Department of Neighborhoods approved a \$10,000 matching grant (application coordinated by Phyllis Campbell and Laurel Doody) for an art-tile project to enhance the park's retaining wall, sitting steps, and concrete walkway with tiles decorated by local volunteers in memory of lost dear ones or anniversaries, births, grandchildren, pets, special events etc. [contact: Laurel Doody, 324-3596].

Fairview-Olmsted Park. This new City park is scheduled for dedication July 15. Remaining issues include its official naming, and a Park Department plan addressing the horsetail, a weed that the contractor apparently brought in with the new soil and mulch [contact: Robert Rudine, 325-3839, rrudine@aol.com].

North Gateway. This area under the I-5 bridge between Eastlake and Harvard avenues looked great after City and volunteer landscaping, but has experienced a setback from a state seismic retrofit project. Fortunately, there are strong requirements (backed up by videotapes and photos) for the contractor to restore the area, including the unique stone walls [contact: Kingsley Joneson, 323-6031].

Colonnade Park. The neighborhood plan proposes a design process to install steps and a multi-use trail under I-5, lighting, and other improvements (see separate article). The June 2000 Stewardship Committee letter requested that SEATRAN apply directly for federal funds to build the steps and trail, or arrange for WSDOT to apply; the letter also requested that the City urge WSDOT to ensure adequate drainage, treat runoff, install plantings, and keep the area clean, safe, and well-lighted. In addition, mountain biking volunteers are proposing to construct some dirt trails in the area.

....Continued on Page 6



**FEDERAL MORTGAGE
COMPANY, INC**

WE SPECIALIZE IN MORTGAGE LOANS FOR SELF EMPLOYED INDIVIDUALS

SPECIAL DISCOUNTS FOR EASTLAKE AREA RESIDENTS, BUSINESS OWNERS, AND EMPLOYEES

CONRAD WOUTERS
2371 EASTLAKE AVENUE EAST
SEATTLE, WA 98102
EMail: conrad@fedmtg.com

PAMELA WOUTERS
PHONE (206) 325-8400
FAX (206) 325-8482
EMail: pam@fedmtg.com

Advertise in our newsletter and reach even more potential customers in your area.



Call Judy Smith at 709 - 8631 for our reasonable advertising rates and deadline information.

Parks and Recreation and Community Opens New Park on Fairview Avenue East

On a lazy Saturday in July, the Walking Fish will lead the Batucada Yemanja do Pacifico Samba Band and joyous community members on a parade through a small park near Lake Union. This parade will be the auspicious beginning to the grand opening celebration of the tentatively named "Fairview - Olmsted Park" located at 2900 Fairview Avenue East.

The celebration happens Saturday, July 15, between 2:00 and 5:00 p.m., and the Seattle Department of Parks and Recreation, with the Olmsted - Fairview Park Commission, invites everyone to join them as they officially open another new park in Seattle. The festivities will include food, music, and storytelling from Upper Skagit Elder and National Living Treasure Vi Hilbert.

The new park includes such improvements as relocation and expansion of an existing P-Patch, a timber and steel framed stair connecting Eastlake Avenue East and Fairview Avenue, log and stone benches; extensive revegetation with native plants, shrubs and trees; and construction of a deck/overlook, gangway, and small boat hand launch.

For more information about the grand opening celebration, contact Tammy Reed at (206) 233-7929.

**Celebrate Eastlake's New Parks
at Fairview-Olmsted Park
Saturday, July 15, 2000
2P.M.-5P.M.**

NOTICE OF PROPOSED LAND USE ACTION
Master Use Project# 07152000
Address: 2900 FAIRVIEW AVE. E.
REVIEW OF THE FOLLOWING PROJECT:
MASTER USE PERMIT TO ESTABLISH PARK,
ENLARGED P-PATCH, INTERPRETIVE TRAIL,
SALMON SPRAWING VIEWING STAND, PICNIC
AREA AND WILDLIFE PRESERVE.

STATUS: We did it!

end of the comment period is Never
ent period may be extended until NEVER by the
the within comments or objection letters
Seattle's Department of Construction and
Phone: 206-467-3400

Samba w/ Batucada, Vi Hilbert, City, Parks & O-FPC Speakers
© 2000 dogfish, rutine/tiresous humour productions

Follow-through on Neighborhood Plan - continued from page 4

I-5 noise retrofit. Paid for by \$10,000 from the Early Implementation Fund that the neighborhood earned by completing a neighborhood plan, an acoustic engineering study has developed guidelines for the design of noise walls along Boylston and Harvard avenues. Initiative 695 knocked our noise walls out of the state budget, with an I-5 Ship Canal bridge noise retrofit study also in jeopardy. Initiative 745 would set us back further, as it proposes to reduce the proportion of transportation taxes spent on reducing noise, polluting runoff, and other "non-road" expenses [contact: Ted Lane, 329-2600, thomaslane@msn.com].

Diesel compression brake ban. The City Council adopted an ordinance authorizing the WSDOT to erect signs prohibiting use of these noisy brakes on our section of I-5 and SR520. SEATRAN has requested installation of the signs by WSDOT, which has not yet done so [contact: Jim Simpkins, 860-0076, jimsi@exmsft.com].

Eastlake Avenue: Subject to local landowner consent and input, and with a combination of Early Implementation Funds, Neighborhood Street Funds, and Neighborhood Matching Funds, the City next year will design and build a planted median (boulevard strip) in the middle of Eastlake Avenue between Boston and Newton streets. The same Neighborhood Matching Fund grant will build a sidewalk on the north side of Newton Street with cornerstone art [contact: Chris Leman].

Harvard Avenue: Parking has been restored on the east side of Harvard where there formerly was a commute-time restriction. However, the City has not yet acted on the neighborhood plan's priority to reopen the crosswalk on the north side of Roanoke Street for access to the bus stop. The June 2000 Stewardship Committee letter requested that the City's implementation plan commit SEATRAN to work with the community to re-establish this pedestrian access [contact: Cheryl Thomas, 329-2696, thomaslane@msn.com].

Boylston Avenue: SEATRAN has not begun to address two high priorities from the neighborhood plan—restoring the crosswalk to the north side of Roanoke Street (see above); and fixing the dangerous Newton/Lakeview/I-5 ramp intersection. The June 2000 Stewardship Committee letter requested that SEATRAN develop a redesign of the latter intersection, as the lack of a design is jeopardizing the intersection's otherwise very high eligibility for Neighborhood Street Funds.

Express bus stops on Eastlake Avenue. Metro express buses use Eastlake Avenue in the afternoon and on weekends without any stops in our business district; the neighborhood plan calls for adding two or three stops along Eastlake Avenue (as now with route 66), a position that is supported by Fred Hutchinson Cancer Research Center, with support also possible from the University of Washington. The June 2000 Stewardship Committee letter requested that the City work with the community and King County Metro on this issue. Letters to the County Executive (ron.sims@metrokc.gov) and our Councilmember (larry.gossett@metrokc.gov) are needed: King County Courthouse, 516 Third Ave., Seattle 98104-2312. A volunteer is needed.

Cobblestone streets. The City has committed not to remove the cobblestone streets at Boston, Edgar, and Louisa, but a study (possibly via the Neighborhood Matching Fund) is needed on how best to restore and preserve them. A volunteer is needed.

Eastlake Ave. pedestrian district: Earlier this year, the Department of Design, Construction, and Land Use worked with community volunteers to explore possible development standards for portions of Eastlake Avenue, encouraging more mixed use development and discouraging new curb cuts. DDCLU is preparing a review draft, with a public meeting yet to be scheduled [contact: Jim Reckers, 323-8537, invader5@msn.com].

Community design guidelines. The neighborhood plan proposed four guidelines (1) roof sightlines and roofscapes; (2) reuse and preservation of existing buildings; (3) width of new residential buildings; and (4) the character of Eastlake's storefronts and residential facades. The City is reviewing these along with guidelines proposed by other neighborhoods. A neighborhood meeting will be held to review any City proposals that emerge [contact: Jim Reckers, 323-8537, invader5@msn.com].

Views. The plan's recommendation for strengthened City policies regarding treatment of private and public views is now being studied as a citywide issue [contact: Carol Eychaner, 324-1716].

Fairview 15 mph limit. As a part of adoption of the neighborhood plan, SEATRAN agreed to install 15 mile-per-hour signs on Fairview between Roanoke and Newton, and the City Council recognized this effort as being "in progress." Nearly two years later, no signs have yet been installed. Letters to the Chair of the City Council's the Transportation Committee, are needed: richard.mciver@ci.seattle.wa.us; City Council, 600 Fourth Avenue, Seattle 98104-1876.

Fairview green street. The ordinance adopting the Eastlake Neighborhood Plan designated as a "Green Street Type III" the stretches of Fairview between Fuhrman and Hamlin, and between Roanoke and Newton. However, the specific meaning of this designation awaits a neighborhood study and consensus. A volunteer is needed to draw up a Neighborhood Matching Fund application to help the process along.

Fairview-Edgar connection. In adopting the neighborhood plan, the City Council directed "particular attention" to the gap in the Lake Union Trail between Fairview Ave. just north of Mallard Cove and the upper Edgar street end, and designated SEATRAN and DCLU to lead a public process (specifically to include affected property owners and others) to develop proposals. Also, SEATRAN committed to explore pedestrian access options through the street use permit issuance process. The City has not begun these work items.

24-Hour Bank Machine Service and Debit Card!

Through the network of Exchange, Accel and Plus ATM's, you may bank around the clock, around the world. The ATM and VISA Check Cards are available to checking account holders upon approval. You may use your ATM Card or Debit Card for:

- Deposits to Savings Accounts
- Deposits to Checking Accounts
 - Fund Transfers
 - Direct Purchases

All This With a FREE Checking Account!

SHARE
CREDIT UNION
206-568-8080

TOP TEN REASONS WHY I CAN'T JOIN SOUND MIND & BODY'S EASTLAKE FITNESS CENTER:

- 10.) The view of Lake Union from the Stairmaster is too distracting.
- 9.) I already know how to use exercise equipment and I don't need any help.
- 8.) The locker rooms are too clean - I'd rather shower in a mildew-infested sweatbox.
- 7.) I have a headache.
- 6.) I'm completely self-motivated to exercise.
- 5.) I'm having my appendix removed this week.
- 4.) It's too convenient - my location and parking excuses won't hold up.
- 3.) I can enjoy the same health benefits watching infomercials.
- 2.) Someone saw Elvis there.
- 1.) Fear! Fear! Fear!

If none of the preceding excuses apply (or even if they do), we'd like to invite you to see our fitness center at 1165 Eastlake Ave. East, located between "Fred Hutch" and Zymogenetics (the old Steam Plant). You'll find the same professional staff, state-of-the art equipment, and friendly atmosphere as at our Fremont and Madison Park facilities plus indoor cycling classes and free parking. Give us a call for more information.

Sound Mind & Body
206.547-3470

1165 Eastlake Ave. E. Seattle, WA 98109



You Have Nothing To Lose But Your Pain

FACT: Chiropractic offers

Proven Relief for:

- ▶ Auto Accidents
- ▶ Back Pain
- ▶ Headaches
- ▶ Neck Pain
- ▶ Sports Injuries

Acupuncture & Massage are also available

No Charge for Initial Consultation

Eastlake Chiropractic Center

206-324-8600

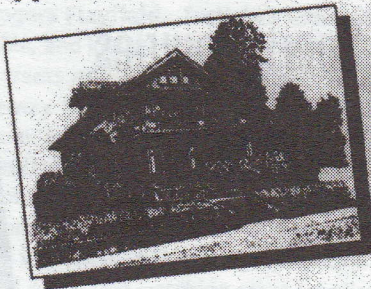
2722 Eastlake Avenue East Suite 360, Seattle WA 98102



Dr. Lincoln Kamell

Preferred provider for: Regence, Blue Cross, Group Health, Virginia Mason and others.

For any housing or real estate investment needs you have in the greater Seattle area, call Windermere's most metropolitan real estate office. Nestled in the heart of the Eastlake Community, with 33 professional Realtor's and top of the line administrative support, we're here to assure you of a pleasant and successful real estate transaction.



**FIRST
CLASS
SERVICE...
SERVING
THE
GREATER
SEATTLE
AREA**

Let us help you today.

206.448.6000

eastlake@windermere.com

www.windermere.com/eastlake/

Windermere

Windermere Real Estate / Northwest, Inc.

1100 Eastlake Avenue East, Suite 200

Seattle Washington 98109-4451

Eastlake Avenue Land Use Report

1600 - Bank of America has joined with Lowe Enterprises, NW, Inc. to develop the site between Blaine and Garfield. They propose approx. 150,000 sq. ft. of office and retail space. BofA will have a separate building and drive through facility.

2035 - This site to the south of Serafina's will be developed as a 12-unit condominium complex.

2343 - A three-story building with ground floor retail will be built on this empty lot.

2722 - A two-story parking structure will be built on the existing surface parking area to service the office building at 2722.

2928 - The State Farm Insurance Building and the house behind it will be developed as a mixed-use building. State Farm will occupy the ground floor. There are 3 floors with 16-18 apartment units.

3217 - The site, just before the University Bridge, will be developed as a four-story (with one subgrade level), 36 unit condominium with 14,000 sq. ft. at ground level for commercial use.

At the final Design Review Board meeting on June 21st, Lowe Enterprises and NBBJ presented their revised design for the Bank of America project [1600 Eastlake]. The exterior of the 6-story building will be composed of concrete and metal with a glass column entryway. Ground floor retail will anchor the NW corner. The new BofA building will anchor the SW corner. There will be an outdoor plaza with landscaping and artwork. Underground parking will accommodate 265 plus cars for retail, bank and office requirements. There will be an additional 18 spaces in the plaza area. The Design Review Board was enthusiastic about the building's design and the inclusion of much landscaping to echo the conifer grove behind the site under I-5. Lowe Enterprises has involved the ECC in the planning process from the beginning and their inclusive philosophy should serve as a model for future development and neighborhood cooperation.

The enormous yellow crane towering above Eastlake Avenue is there for the construction of the office building being developed by Chris Hughes, who already has two buildings in our neighborhood. Take a peek through the portals provided for sidewalk superintendents.

Construction on the Brad Decker project progresses and soon will be visible above street level. It's at Furhman and the University Bridge.

Follow-through on the Neighborhood Plan - continued from page 6

Fairview pathway south of NOAA. An "early win" for the neighborhood plan was installation of a landscaped path in front of NOAA; the plan also recommended a pathway south of NOAA to the Fairview Ave. N. bridge, but contingent on a design that the various stakeholders, especially abutting property owners, find acceptable. A topographic and land survey of the area was listed in the December 1, 1998 City adoption of our neighborhood plan as having been "already accomplished," but the City has not yet completed it, and it remains on the city's current implementation plan. Lack of the survey is seriously delaying the design and funding process [contact: John Crowser, 324-9530, jcc@hartcrowser.com].

Fairview Ave. E./Fairview Ave. N. intersection. The City's uncompleted topographic and land survey (see above) is also needed to develop a consensus on design for this intersection. Lack of the promised survey is seriously delaying the design and funding process [contact: Chris Leman].

Stockley donations appreciated and still welcome

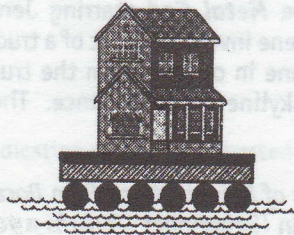
The Stockley family and the recipient organizations deeply appreciate the individuals and businesses who have remembered Peg and Tom Stockley with memorial donations. Donations may still be made to: Eastlake Community Council, 117 E. Louisa St. #1, Seattle 98102; Eastlake Community Land Trust, c/o Treasurer Duane Richardson, 1926 Fairview Ave. E. #201, Seattle 98102; and the American Parkinson Disease Association, c/o UW Dept. of Neurology, P.O. Box 356465, Seattle 98195. Be sure to mention that the check is for the Stockley fund.



Eastlake Houses need you

Volunteers are sought to find a new resting place for the historic houses across Eastlake Avenue from the Silver Cloud Inn. If you would like to get involved, or know someone will to donate land for their relocation, contact Chris Leman, 322-5463, cleman@oo.net.

Floating Home Insurance



FINALLY!

A BETTER FLOATING HOME INSURANCE POLICY.

It has taken 22 years and the backing of the oldest marine insurance company in North America to get it right... and to get it *priced right too!*

- 1. Very competitive rates, far superior coverages**
 - 2. Agreed value on total loss. No depreciation.**
 - 3. Personal property covered ashore, or in storage units.**
 - 4. Automatic coverage for adjoining floats, structures**
 - 5. Freeze damage covered. Flooding covered.**
 - 6. High liability limits available.**
 - 7. Medical payments included.**
 - 8. Salvage coverage included.**
 - 9. Flexible deductibles to lower premium.**
 - 10. Hired workers covered while at floating home.**
-and more!**

**CONTACT THE BOAT INSURANCE AGENCY AT
285-1350 FOR DETAILS AND A QUICK COMPARISON
(conveniently located at 1500 Westlake on Lk. Union)**

**This exclusive program is brought to you by
Cigna Insurance and the Boat Insurance Agency, Inc.**

G&H PRINTING
The Corner for Fine Printing

2370
EASTLAKE AVE. E.
SEATTLE, WA 98102

E. LOUISA ST.

phone 329-9888
fax 324-3705

Tidbits

Eastlake in the movies - The Eastlake Community Council recently received a donation from Warner Brothers as a thank you for "the great neighborhood cooperation we enjoyed while filming in Eastlake." Warner Brothers was in Eastlake filming a scene for the movie *Metal God* starring Jennifer Aniston and Mark [Marky-Mark] Wahlberg. The scene involved a shot of a truck driving along Boylston. The film crew brought in a crane in order to film the truck in front of the homes along Boylston with the city skyline in the distance. The film is scheduled to be released Spring 2001.

Interested in getting copies of Neighborhood Plan Documents? A companion to the Eastlake Neighborhood Plan (September 1998) is a volume on Eastlake Neighborhood Plan Adoption and Stewardship (January 2000). The latter volume includes documents that emerged after publication of the Plan, including Ordinance 119322, Resolutions 29838 and 29932, and the official City work program to implement the Eastlake plan. Both volumes are available in the Seattle Public Library central collection and Henry and University Heights branches, as public review copies at many Eastlake businesses and nonprofits, and for purchase at a discounted price at G&H Printing. The Plan, ordinance, resolutions, and work program can be downloaded from the City's web site.

ECC Membership Application

Eastlake Community Council

Name

Address

Phone

Household

\$ 25

Business

\$ 50

Senior Citizen/Student/Low Income

\$ 10

Donation

\$ —

Interests

Parks and Open Spaces
 Traffic/Parking Issues
 Building Guidelines
 Newsletter Distribution
 Fundraising
 Work Parties
 Community Art Projects
 Community Meetings

Member Status

New
 Renewal

Eastlake Community Council — 117 E. Louisa #1, Seattle, WA 98102

MAILING LABEL

Eastlake Community Council
117 E. Louisa St. #1
Seattle WA 98102

POSTAGE